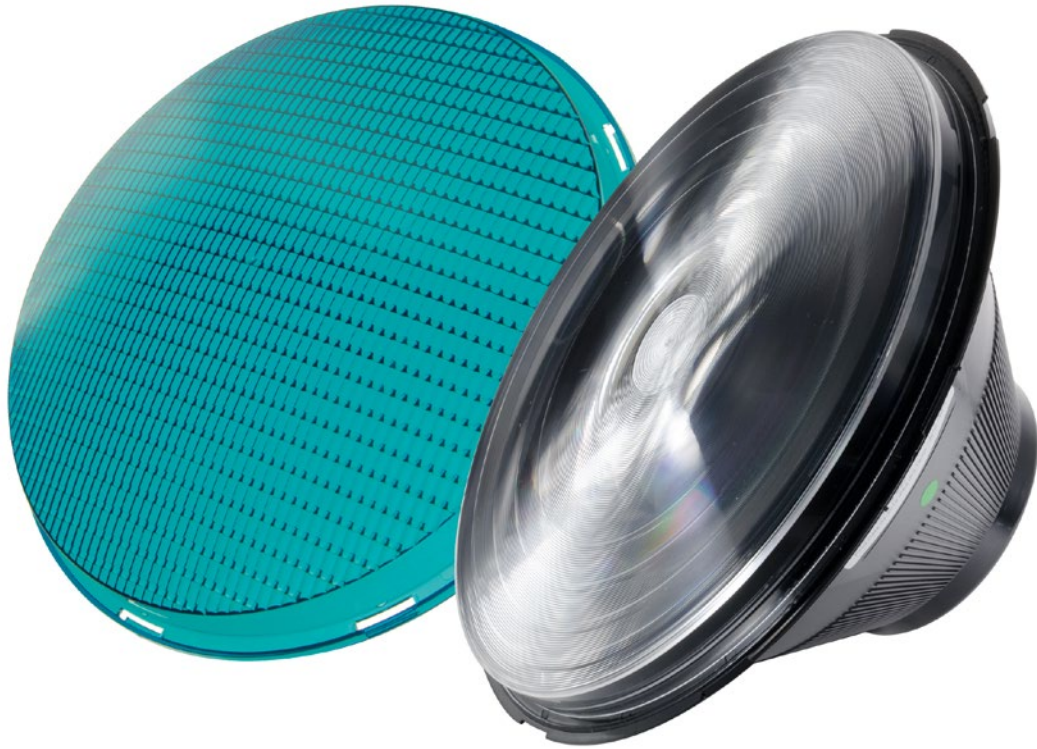


STARLED2

Led Modules for next generation traffic lights



Our history of over 70 years of experience allowed us to realize one of the most innovative solutions for traffic lights lighting based on LED technology.

An electronic control driver runs a central luminous source generated from High Flux LED that thanks to the dual lens system allows to obtain a plain bright light.

Reliable, technologically advanced, easy to install and built in compliance with EN12368:2006, today the line of led optics for traffic lights STARLED2 is on the market as a response to the ever-increasing demands to reduce consumption and environmental respect.

Different power sources available to provide solutions in step with new applications such as photovoltaic panels, extra low voltage for safety applications, etc.

ADVANTAGES

- Vision of the light evenly distributed throughout the lens without Pin effect
- Low power consumption with high light output
- Reduction of ghost effect at the lowest levels provided by EN12368:2006
- Average life more than 10 years
- Available with white tinted lenses and to white for tram signals
- Quick connection system with sliding guides, 3 for diameter 200 mm and 4 for the 300 mm supplied with sealing gasket
- Opening of the simplified module with screwed lens and internal screw with clutch pressure
- Available all symbol masks and on request custom versions
- Highest luminance uniformity level
- No phantom effect
- Neutral lens (Not coloured) available
- Power consumptions available on request (10W-12W-14W)

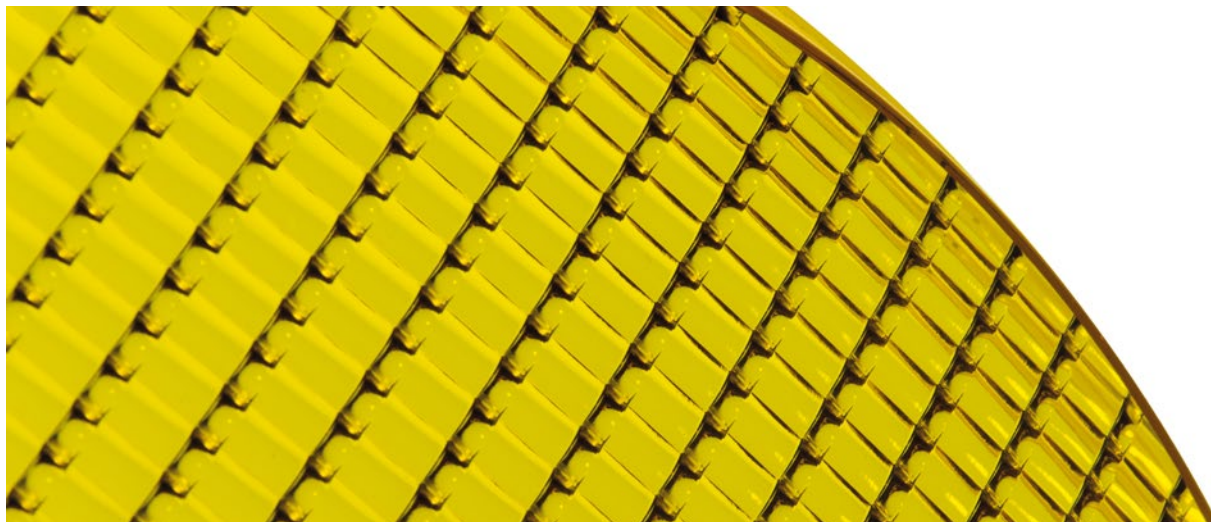
STARLED2 TECHNICAL DETAILS 230V AC - Type E CLC/TS 50509

DIAMETER	Ø210 mm	Ø300 mm
Luminous intensity acc. to EN12368:2006	red > 400cd amber > 400cd green > 400cd	red > 400cd amber > 400cd green > 400cd
Optical performance acc. to EN12368:2006	B3/2W B2/2 W B3/2N B2/2 N	B2/2 W B2/2 N
Colorimetry	acc. to EN12368:2006	
Uniformity acc. to EN12368:2006	better than 1:2,5	
LED type	high flux	
Phantom light class	Class 5	
PF	>0,95	
Operating voltage	196 - 265 V / 160 V - 190 V (with dimmer function the output light is reduced of about 50% of normal level)	
Frequency	50 Hz ± 20%	
Power consumption	red 7/4W amber 7/4 W green 7/4 W white 7/4 W	
EMC	acc. to EN50293	
Cable	2 x 0,75 mm ² ; 1 m length	
Ambient Temperature range acc. to EN12368:2006	class A, B, C -40° C +60°C	
Protection class	protection class II acc. to EN60598	
Protection degree	IP 65 acc. to EN60598	
Impact resistance	class IR3 acc. to EN60598-1	
Material of lens and housing	UV stabilized polycarbonate	
Weight	0,5 Kg	1,0 Kg
Dimensions (frontal lens included)	Ø 208 x 116 mm	Ø 300 x 161 mm



STARLED2 TECHNICAL DETAILS 42V AC - Type C CLC/TS 50509

DIAMETER	Ø210 mm	Ø300 mm
Luminous intensity acc. to EN12368:2006	red > 400cd amber > 400cd green > 400cd	red > 400cd amber > 400cd green > 400cd
Optical performance acc. to EN12368:2006	B3/2W B2/2 W B3/2N B2/2 N	B2/2 W B2/2 N
Colorimetry	acc. to EN12368:2006	
Uniformity acc. to EN12368:2006	better than 1:2,5	
LED type	high flux	
Phantom light class	Class 5	
PF	>0,96	
Operating voltage	31-51Vac / 18-29 Vac (with dimmer function the output light is reduced of about 50% of normal level)	
Frequency	50 Hz ± 20%	
Available standard	Astrin class II - OCIT	
Power consumption	red 7/4 W amber 7/4 W green 7/4 W white 7/4 W	
EMC	acc. to EN50293	
Cable	2 x 0,75 mm ² ; 1 m length	
Ambient Temperature range acc. to EN12368:2006	class A, B, C -40 +60° C	
Protection class	class II acc. to EN60598	
Protection degree	IP 65 acc. to EN60598	
Impact resistance	class IR3acc. to EN60598-1	
Material of lens and housing	UV stabilized polycarbonate	
Weight	0,5 Kg	1,0 Kg
Dimensions (frontal lens included)	Ø 208 x 116 mm	Ø 300 x 161 mm



STARLED2 TECHNICAL DETAILS 10/36V AC /DC

DIAMETER	Ø210 mm	Ø300 mm
Luminous intensity acc. to EN12368:2006	red > 400cd amber > 400cd green > 400cd	red > 400cd amber > 400cd green > 400cd
Optical performance acc. to EN12368:2006	B3/2W B2/2 W B3/2N B2/2 N	B2/2 W B2/2 N
Colorimetry	acc. to EN12368:2006	
Uniformity acc. to EN12368:2006	better than 1:2,5	
LED type	high flux	
Phantom light class	Class 5	
Operating voltage	10 - 36 V AC/DC	
Power consumption	12 Vdc: red 4 W, amber 4 W, green 4 W, white 4 W 24 Vdc: red 5 W, amber 5 W, green 5 W, white 5 W	
EMC	acc. to EN50293	
Cable	2 x 0,75 mm ² ; 1 m length	
Ambient Temperature range acc. to EN12368:2006	class A, B, C -40 +60° C	
Protection class	class II acc. to EN60598	
Protection degree	IP 65 acc. to EN60598	
Impact resistance	class IR3acc. to EN60598-1	
Material of lens and housing	UV stabilized polycarbonate	
Weight	0,5 Kg	1,0 Kg
Dimensions (frontal lens included)	Ø 208 x 116 mm	Ø 300 x 161 mm

